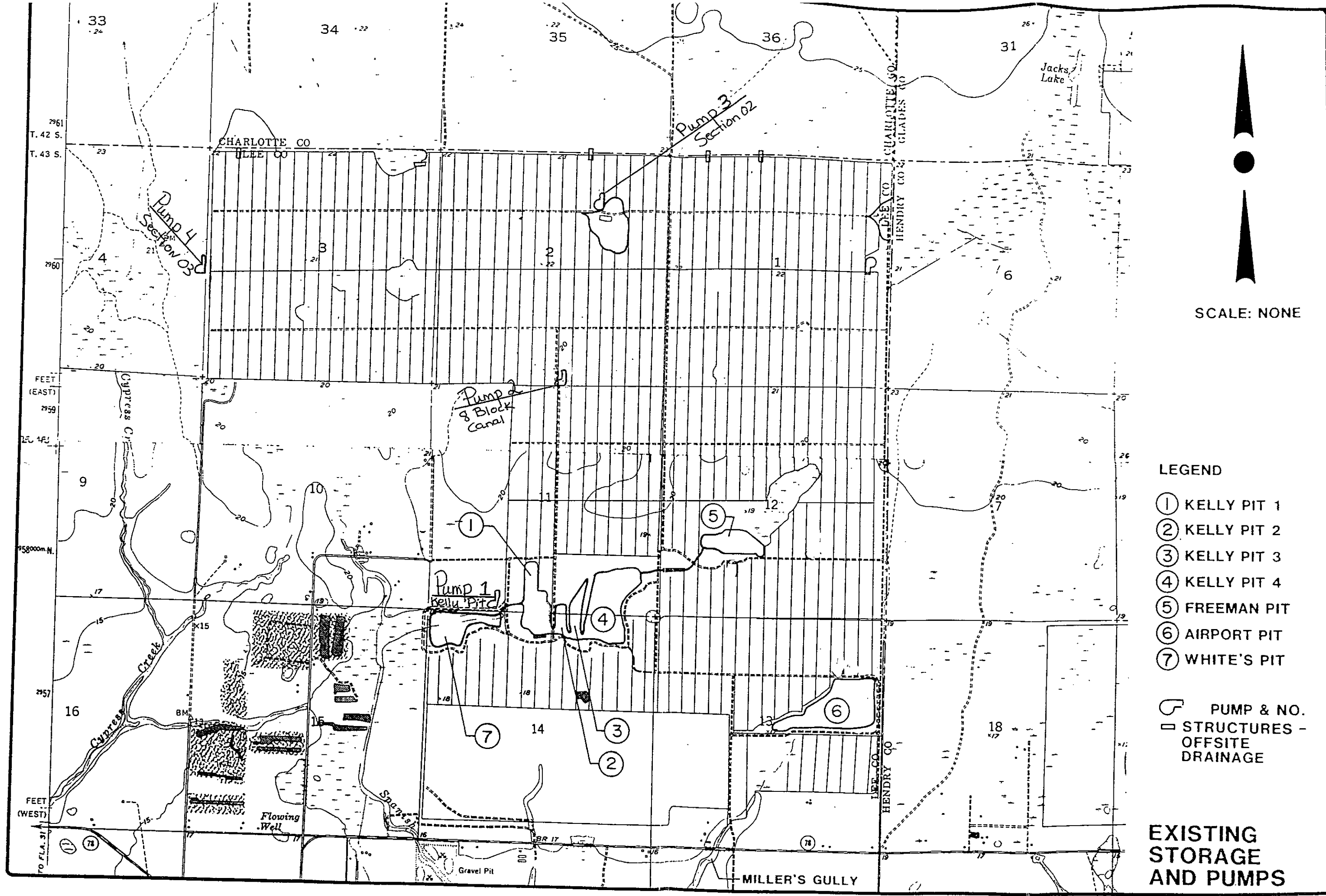


S. W. D. AND L. B. BOBER, INC.



SCALE: NONE

LEGEND

- ① KELLY PIT 1
- ② KELLY PIT 2
- ③ KELLY PIT 3
- ④ KELLY PIT 4
- ⑤ FREEMAN PIT
- ⑥ AIRPORT PIT
- ⑦ WHITE'S PIT

- PUMP & NO.
- STRUCTURES - OFFSITE DRAINAGE

EXISTING STORAGE AND PUMPS

COUNTY LINE DRAINAGE DISTRICT IRRIGATION AND DRAINAGE ANALYSIS

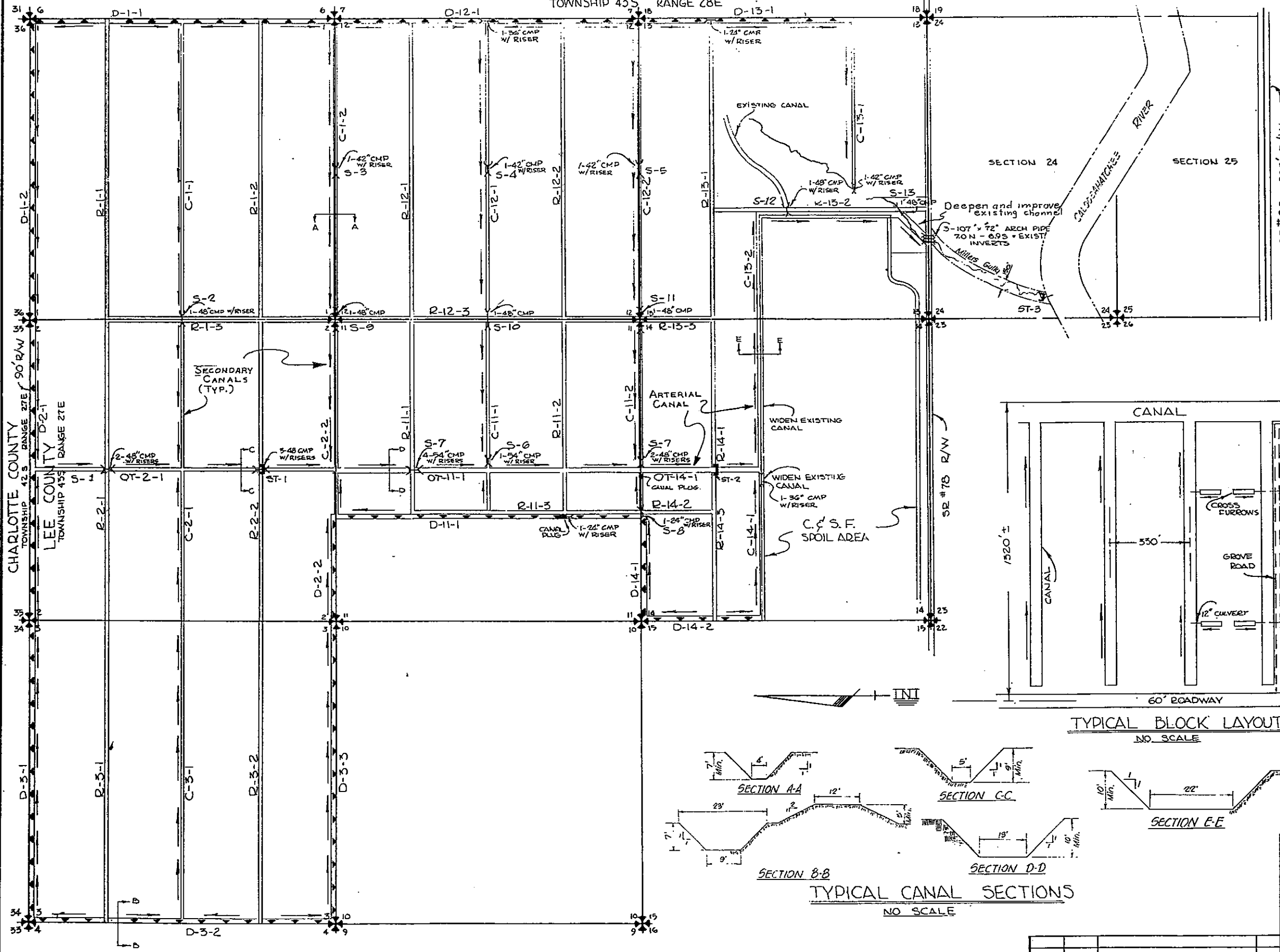
Bojje Engineering Corporation

BEC PROJECT NO. OF-C88-100-00

FIGURE 1

FIGURE 2

HENDRY COUNTY  
TOWNSHIP 43 S. RANGE 28 E

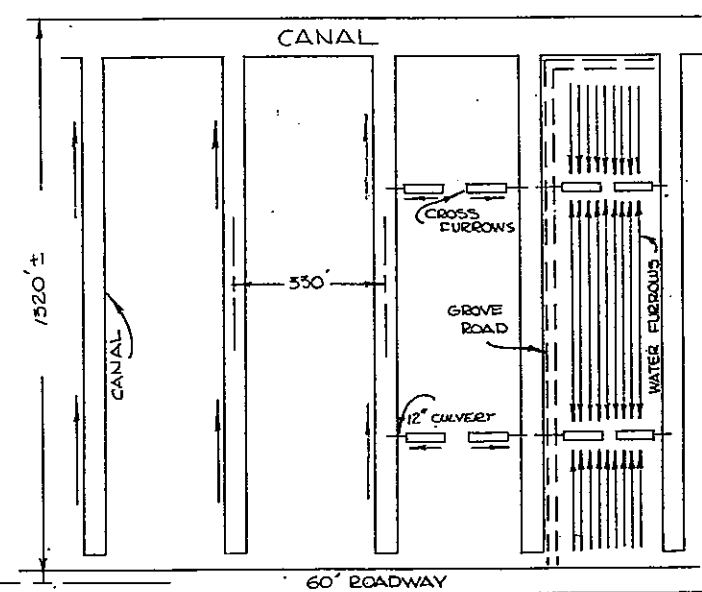


**LEGEND**

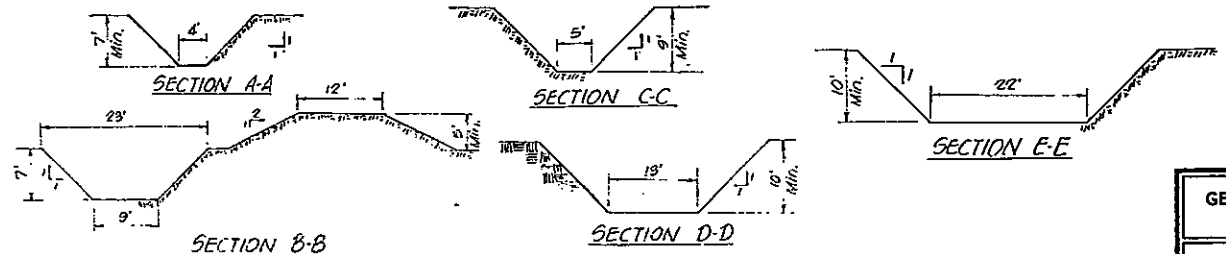
PERIMETER DIKE / CANAL	
ROADWAY R/W SHOWN	
CANAL R/W SHOWN	
CULVERT PLAIN	
CULVERT W/ RISER	
CONTROL STRUCTURE	

**LEGEND**

C	SECONDARY CANAL
D	DIKE
OT	OUTFALL CANAL
R	ROAD
S	CULVERT
ST	WATER CONTROL STRUCTURE



TYPICAL BLOCK LAYOUT  
NO SCALE

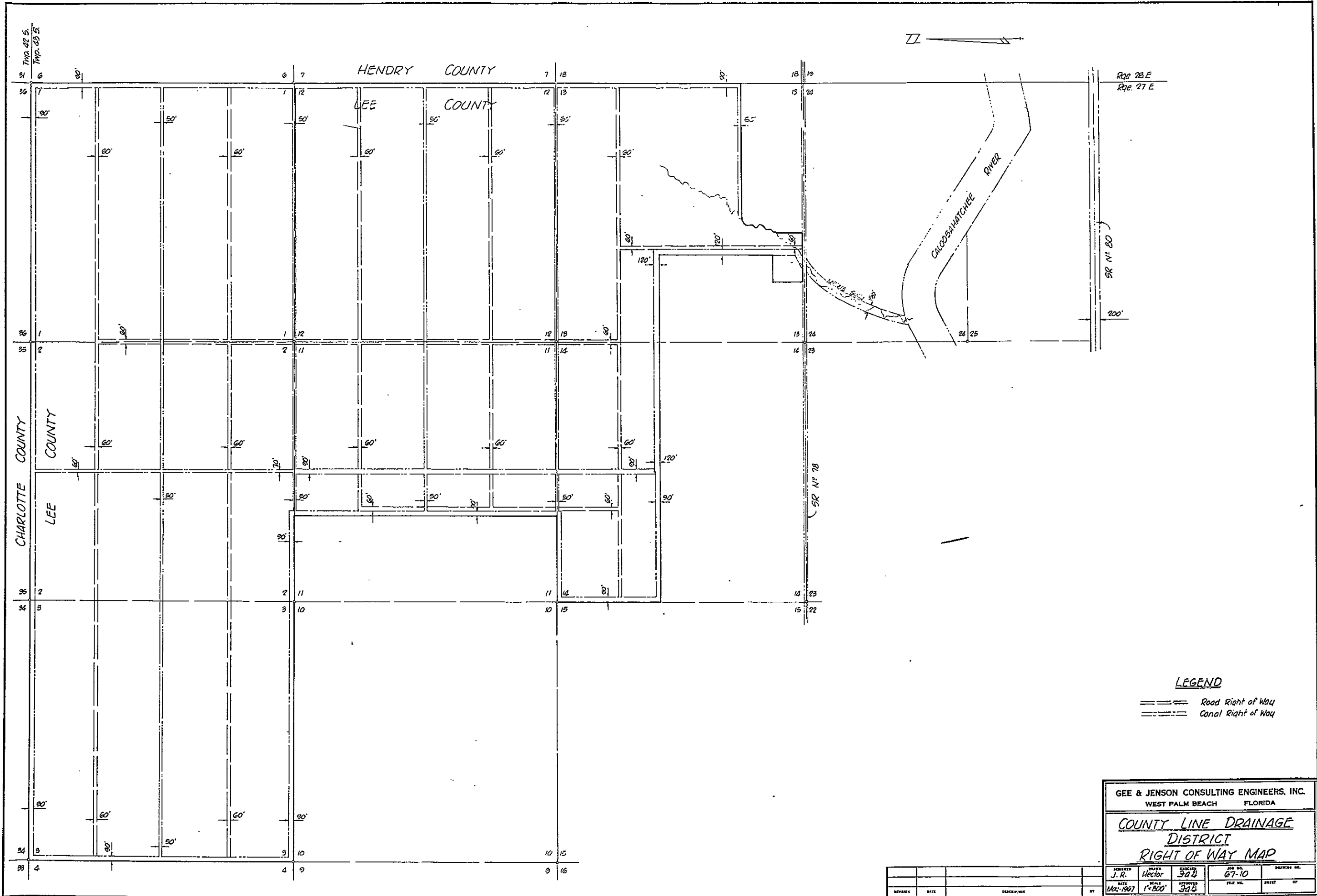


TYPICAL CANAL SECTIONS  
NO SCALE

GEE & JENSON CONSULTING ENGINEERS, INC.  
WEST PALM BEACH FLORIDA

**COUNTY LINE DRAINAGE DISTRICT WATER CONTROL PLAN**

DATE	SCALE	PROJECT	NO.
June 1967	1" = 600'	67-10	



**LEGEND**

- ==== Road Right of Way
- Canal Right of Way

GEE & JENSON CONSULTING ENGINEERS, INC.			
WEST PALM BEACH		FLORIDA	
<b>COUNTY LINE DRAINAGE</b>			
<b>DISTRICT</b>			
<b>RIGHT OF WAY MAP</b>			
DESIGNED BY J. R. Hector	CHECKED BY 392	JOB NO. 67-10	DRAWN BY
DATE Mar-1967	SCALE 1"=300'	APPROVED BY 392	FILE NO. SHEET OF

FIGURE 4



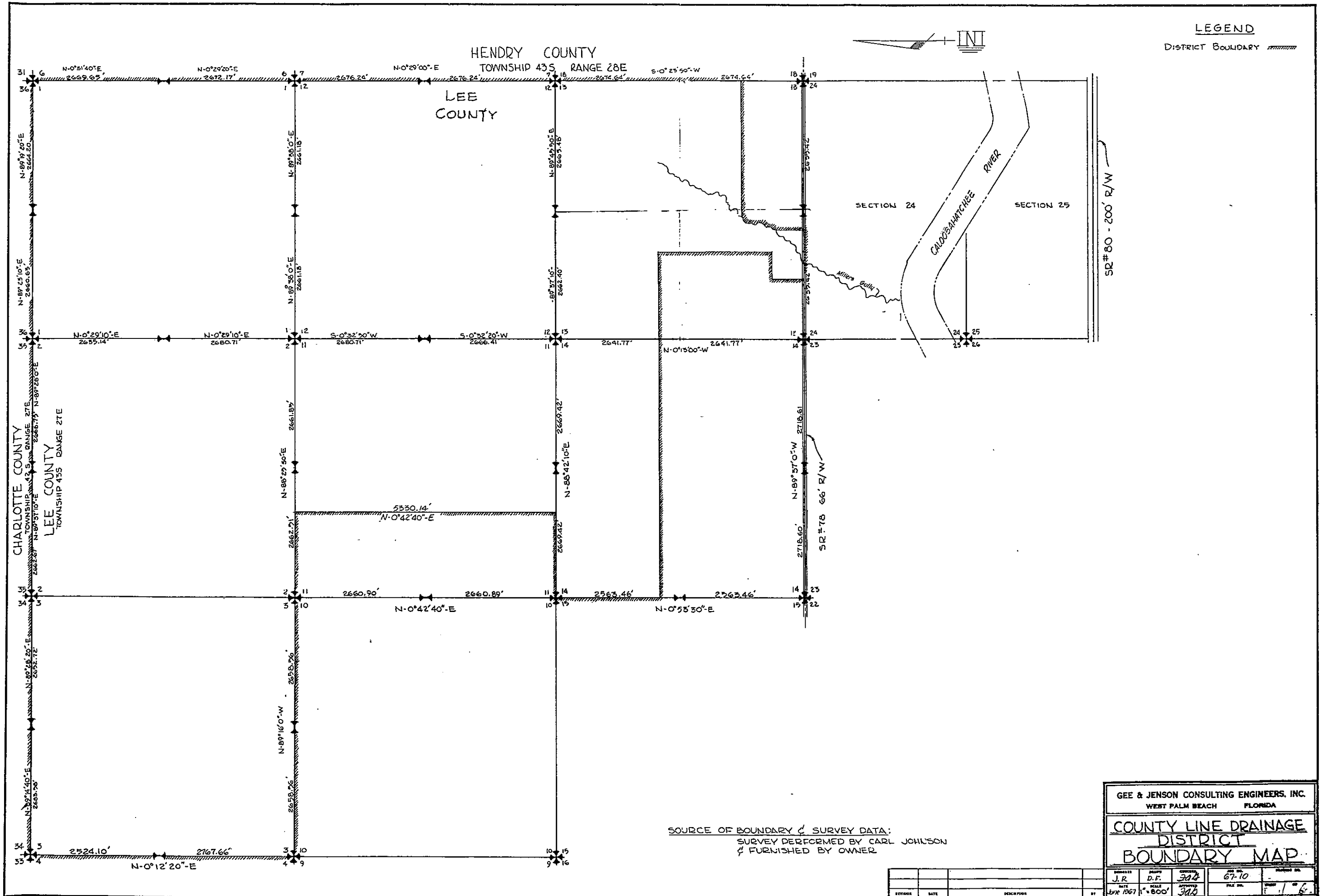


FIGURE 6